

## ■ Objectives

- In order to accelerate the introduction of GMPLS technologies, KDDI R&D is developing

- GMPLS Emulator

- To enable non-GMPLS capable equipment to be controlled by GMPLS
- To envision the future lambda path service based on GMPLS

- GMPLS protocol tester

- To internally test GMPLS protocols
- To evaluate GMPLS functions
- To conduct a kind of GMPLS conformance tests

## ■ GMPLS Specification

- Hardware

- Linux box

- Software

- Signaling basically follows

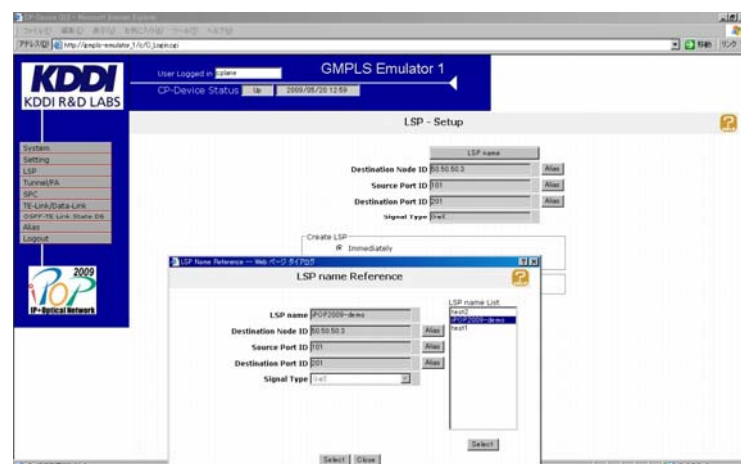
- RFC 3209
- RFC 3471
- RFC 3473

- Routing basically follows

- RFC 3630
- RFC 4202
- RFC 4203

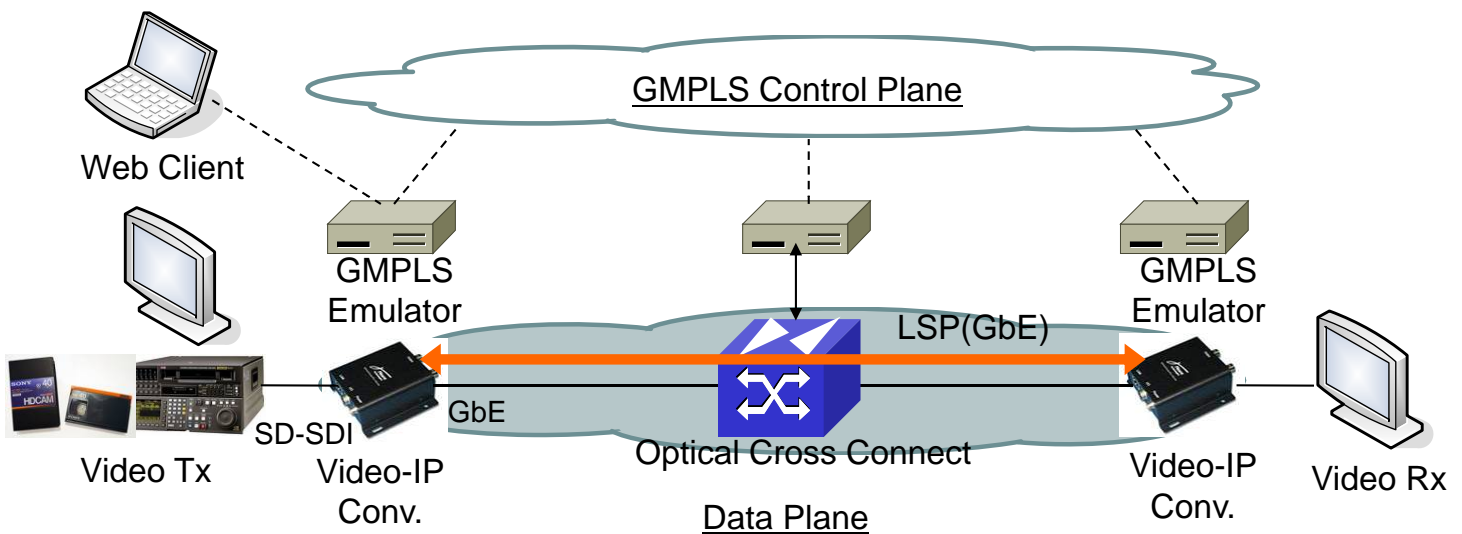
## ■ GUI

- Web-based user interface



## ■ Demonstration

- GMPLS lambda-LSP is provisioned for OC48 connection.
- 300Mbit/s IP stream (converted from 270Mbit/s uncompressed (SD-SDI) video signal ) is transported



## ■ Remarks

- KDDI R&D developed the GMPLS Emulator
  - to enable a non-GMPLS equipment to support GMPLS.
  - to provide a GMPLS lambda service.
  - to conduct a GMPLS protocol test.

GMPLS Emulator helps KDDI to introduce GMPLS technology in KDDI network.