

# JDSU 100GE/40GE Testing

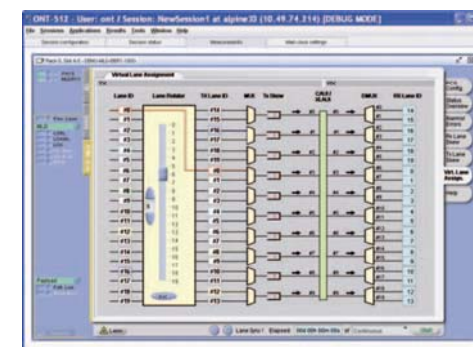
—ONT-503/506/512—



100GE/40GE/OTU4 Support in One-Box

## High Lights

- OTU4 Bulk & Client supports
- 100GE/40GE
  - ◆ Multi rate testing - 39G/43G (Unframe)
  - ◆ Adaptor board availability for QSFP/CXP (future)
- Physical Layer Validation
  - ◆ Slew insertion and analysis - Static & Dynamic
  - ◆ Clock offset feature - up to 500ppm
  - ◆ Test patterns - PRBS, 32bit digital words and more...
  - ◆ Electrical interface module (CFP) availability
- PCS/MAC/IP Testing
  - ◆ BERT per 20 virtual lanes
  - ◆ Programable virtual lane mapping
  - ◆ 256 multiple streams generation & analysis
  - ◆ Statistics



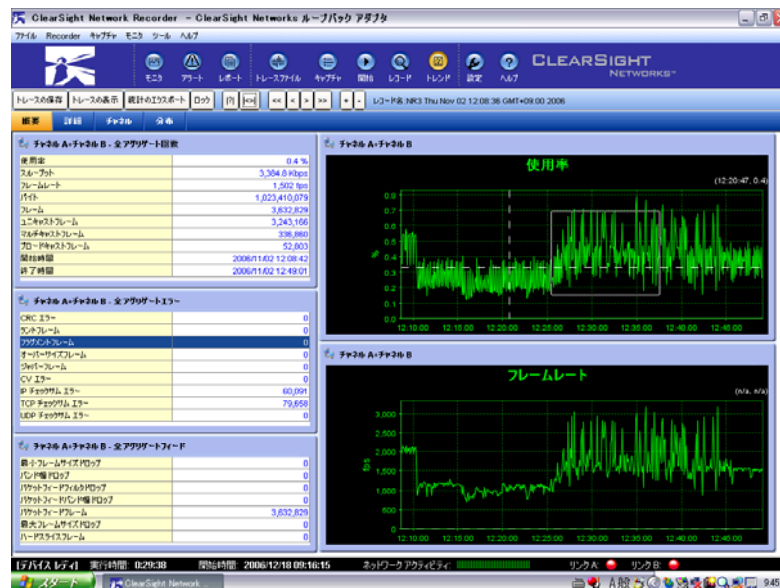
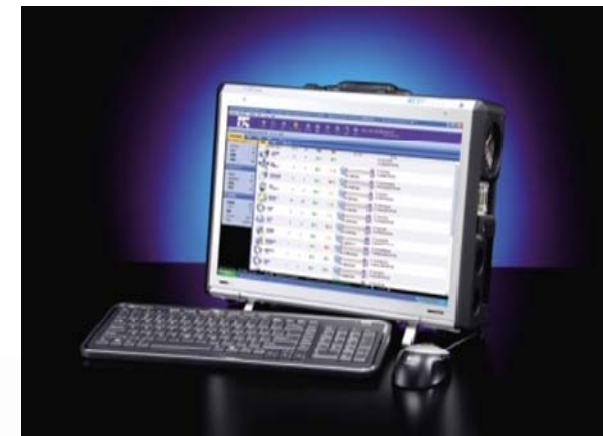
# 10G Network Time Machine Portable

Next Generation Large Traffic Capturing Tool  
...Writing "directly" the traffic data onto the large HDD



## High Lights

- Very long-term traffic capturing at 10Gbps
- Without dropping any packets
- 2 ports configuration
- Intuitive and graphical ClearSight Analyzer for traffic analysis



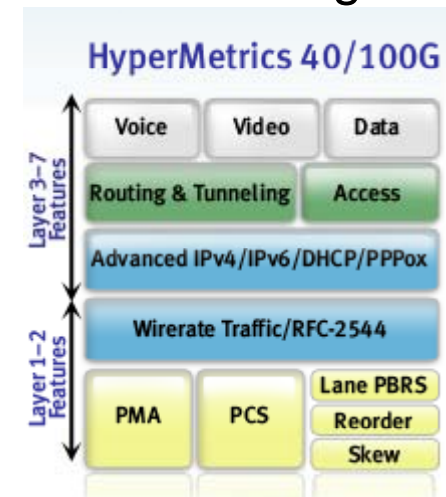
# Spirent 40GbE/100GbE Solution – Spirent TestCenter –



- Leveraging Spirent's HyperMetrics multi-core processor, the 40/100G Ethernet test module validates performance, scalability and realism. Further, to support all aspects of 40/100G Ethernet development the Spirent TestCenter HyperMetrics 40/100G Ethernet modules goes beyond Layer 2-7 to include Layer 1 functional testing.

## Feature

- 40GbE/100GbE wire rate test
- Multi Core & Multi Thread Architecture
- 100G, 2x 40G per Module
- Layer 1 lane skew and PRBS testing



*hyper***METRICS**

# 10Gigabit Ethernet Network Emulators:



- Anue Systems Network Emulators replicate the delays, bandwidth and impairments found on the Internet and Enterprise production networks
- We support Sonet/SDH, OTN, FC, CPRI
- Hardware-based architecture provides the performance and repeatability 10M/100M/1G & 10Gigabit Ethernet (LAN/WAN-PHY)
- Deployment of Triple Play Services TIA-921, IPTV (I,B,P Frame Imparament)

