

OA LABORATORY CO.,LTD.

8Port Gigabit Ethernet L2 Switch with PTP & PoE+

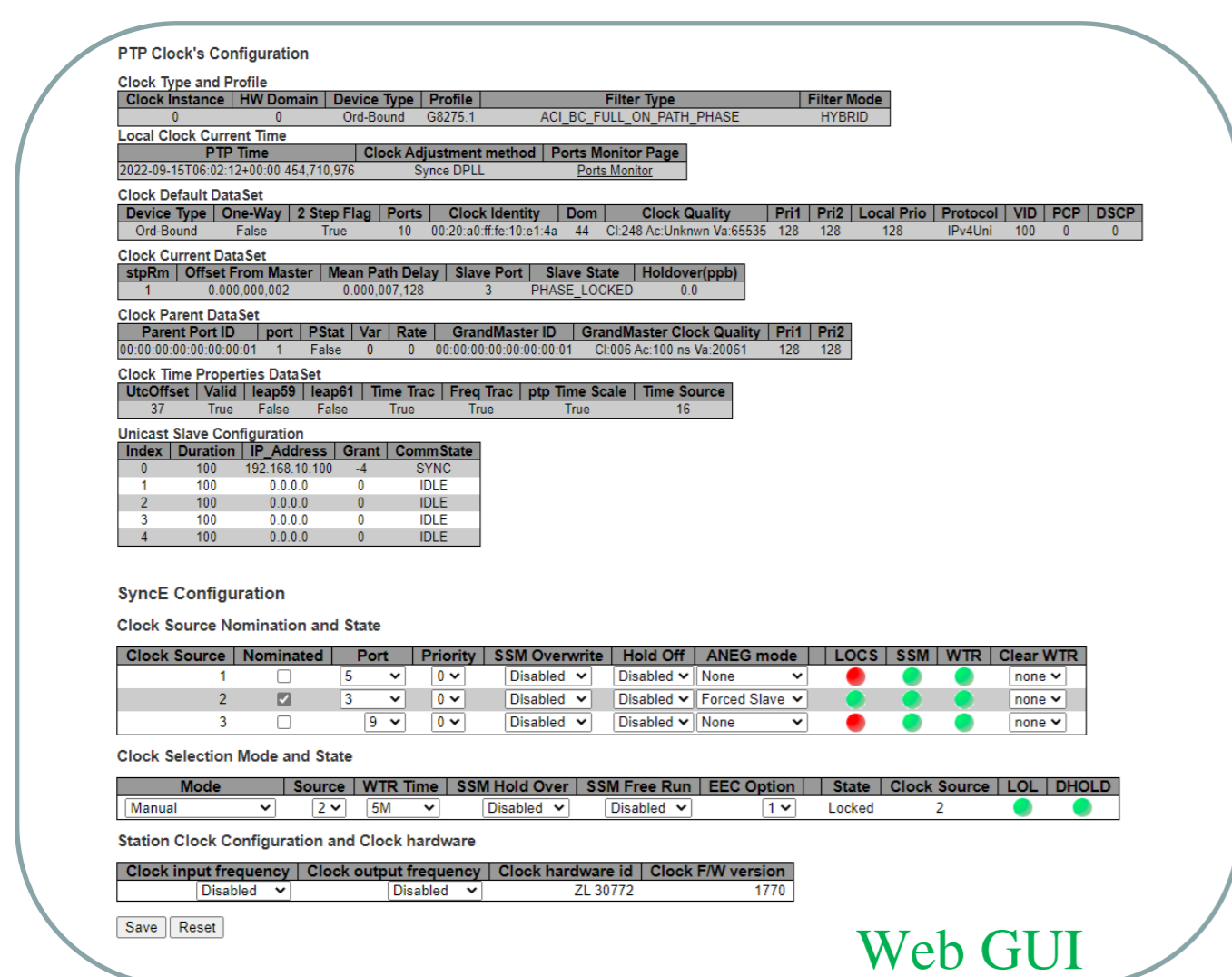
Here is our brands new Layer-2 switch solution product, featuring two industrial network function, Precision Time Protocol IEEE1588 v2 compliant and Power over Ethernet / PoE+ supported. We are planning to launch in a few days for customer's various network applications. This box can be immediately operation without any complicated setting.

【Product features】

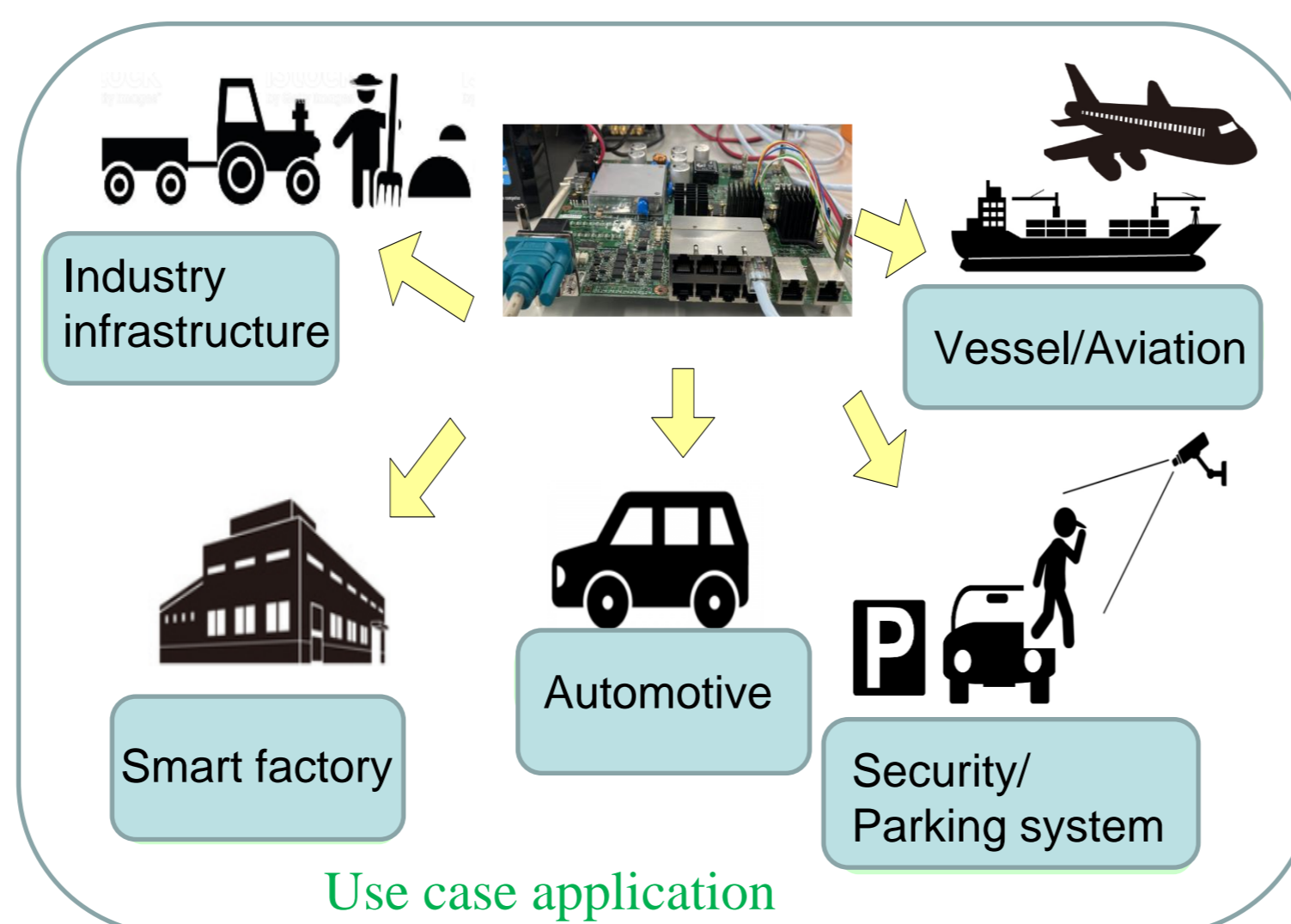
- PoE+ & IEEE1588v2 (PTP) 10/100/1000Base-T × 8port
- SyncE, PTP profile : 1588, G8275.1, G8275.2
- Transparent Clock (TC), Boundary Clock (BC) supported
- PoE+ (IEEE802.3at/af) Power supply :Total:140W (MAX:30W/1port)
- Power input range DC : 16~28V (Typ 24V)
- Monitoring function Web GUI support, SyncE/PTP clock's configuration



Size : 260mm(W) x 160mm(D) x 75mm(H)



Web GUI

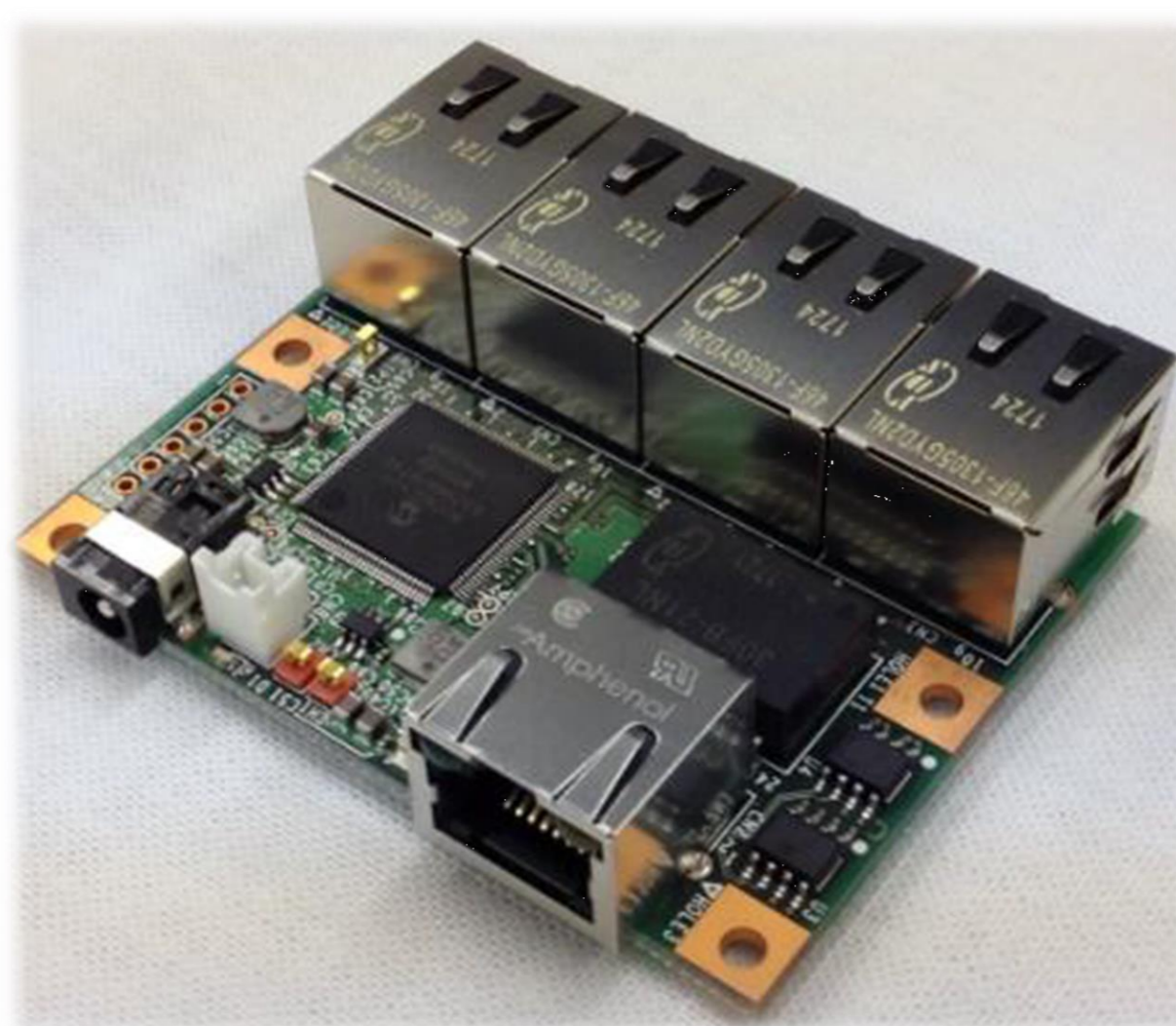


Use case application

Original Products/L2 Switch Solutions

Small Form Factor Embedded Switching Hub

EMB-5PG-L2SWH

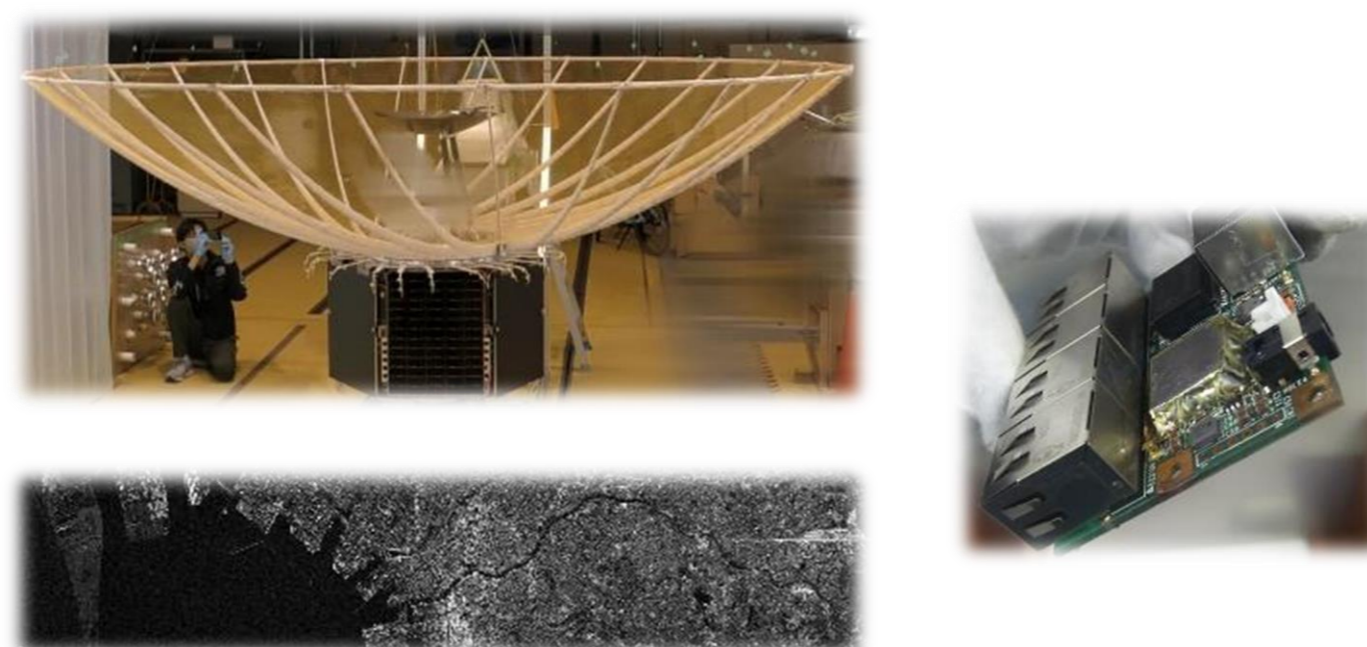


Case-1 Underwater drone



FullDepth Co., Ltd.

Case-2 Small SAR satellite



iQPS Inc.

For specific applications

L2 Switch VC2404GE

10BASE-T/100BASE-TX/1000BASE-T 24port / SFP+ 4port



- Traffic segmentation
- MAC address filtering
- VLAN
- ACL
- Snooping (IGMP/MLD)
- Spanning tree (STP/RSTP/MSTP)
- QoS
- Monitoring/Management (CLI, WebGUI, TELNET, SNMP, SSH)

