

OA LABORATORY CO.,LTD.

12-Port Gigabit L2 Switch module compliant Smart Mobility Architecture (SMARC)

Here is our brand's new Layer-2 switch solution product, 12-Port Gigabit L2 Switch module compliant Smart Mobility Architecture (SMARC). We are planning to launch in a few days for customer's various network applications. This module can be immediately operation without any complicated setting. We can also develop and supply custom carrier boards.

【Product Overview】



SMARC compliant Module Size : 82mm(W) x 50mm(D) x 15mm(H)

Switch Device : Microchip **VSC7425**
 18 Port Managed L2 Switch with 12 Cu PHYs

【 Feature 】

- 10/100/1000Base-T × 12-Port supported.
- 1000Base-X × 2-Port supported.
- Switch device (Processor, PHY included), ROM, and power control devices are all installed in the module.
- DC Power supply : 5V±10%
- Transformer-less ethernet connection supported.

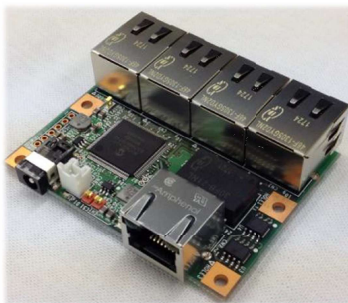


Carrier board example, we can provide custom board design

Original Products/L2 Switch Solutions

Small Form Factor Embedded Switching Hub

EMB-5PG-L2SWH

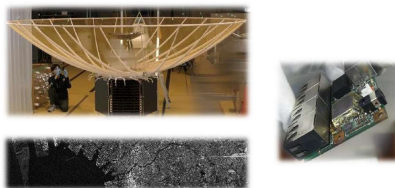


Case-1 Underwater drone



FullDepth Co., Ltd.

Case-2 Small SAR satellite



iQPS Inc.

For specific applications

L2 Switch VC2404GE

10BASE-T/100BASE-TX/1000BASE-T 24port / SFP+ 4port



- Traffic segmentation
- MAC address filtering
- VLAN
- ACL
- Snooping (IGMP/MLD)
- Spanning tree (STP/RSTP/MSTP)
- QoS
- Monitoring/Management (CLI, WebGUI, TELNET, SNMP, SSH)

